

**REPORT ON THE ACTIVITIES OF THE TOURISM
& CULTURE (TOURISM) DEPARTMENT
FOR THE YEAR 2006-2007**

1. Introduction

Tourism basically means movement of people from one place to another which consequently brings in its trend the need for creating required infrastructure and provide necessary services to the tourists. Tourism is therefore a conglomeration of several activities. It is one of the sectors which has the potentiality to stimulate growth of employment generation in the related fields like Hotels, Transport, Shopping, Food, Entertainment, Guiding etc. It is the hospitality sector which binds together a lot of other employment generating sectors through backward and forward linkages.

Tourism related activities not only create direct jobs but also creates opportunities for indirect jobs. According to an estimate, for every million rupees invested in Tourism sector, 47 jobs are created against 45 jobs in Agriculture Sector and 13 jobs in Manufacturing Sector. The ratio of indirect jobs to the direct jobs in the Tourism Sector is approximately 1: 3. Hence Tourism is a highly labour intensive sector. In fact, there is a multiplier effect of employment generation in the Tourism sector because of its variety of areas where direct and indirect job opportunities are created. It is estimated that about 2.4% of the total labour force in India work in the Tourism related fields. In Orissa, it has been assessed that 92,206 persons are directly engaged while 2, 76, 618 persons are indirectly engaged in the Tourism Sector.

It is difficult to quantify the exact number of jobs created in the Tourism Sector especially indirect jobs, as the areas are very vast and varied. Tourism facilitates creation of employment opportunities in more ways than creating direct jobs. Wherever Tourism grows, Tourism related activities also grow which create employment opportunities. Growth of Tourism also strengthens the local economy as it help flow of money including foreign exchange earnings from one region to the other. High priority is therefore accorded for development and promotion of Tourism in Orissa.

2. Organisation

2.1. Started as a Public Relations Activity, Tourism became a regular function of the Government with the creation of Tourism and Cultural Affairs Department in the erstwhile P& S Department Resolution No.17313 - Gen, dated the 13th November, 1973. The Department thus created was subsequently renamed as Tourism, Sports & Culture Department in G.A. Department Resolution No.14386 - Gen, dated the 10th June, 1980. In the process of further re organisation of Departments, a separate Department was created for Tourism in G.A. Department Resolution No.270 - Gen, dated the 2nd January, 1991. Subsequently, a new Department of Tourism & Culture has been created in G.A. Department Resolution No.29049 - Gen, dated the 30th December, 1995.

2.2. The Tourism Wing of the Department of Tourism & Culture has a Composite Office. Directorate of Tourism is a part of this Composite Office. There are 18 Tourist Offices .i.e. at New Delhi, Kolkata, Chennai, Balangir, Balasore, Baripada, Berhampur, Bhawanipatna, Bhubaneswar, Cuttack, Dhenkanal, Keonjhar, Konark, Koraput, Phulbani, Puri, Rourkela & Sambalpur and 6 Tourist Counters at i.e Bhubaneswar Airport & Railway stations of Bhubaneswar, Puri, Howrah, Vizianagaram and Raipur city are operating in & outside State for assisting tourists.

2.3. A Public Sector Undertaking namely, Orissa Tourism Development Corporation Ltd. is functioning under the administrative control of the Department of Tourism . Constituted in Tourism Department Resolution No.3221-TSM, dated the 27th February, 1979, it was incorporated under the Indian Companies Act, 1956 on the 3rd September, 1979.

3. Objective

3.1. The main objective of this Department is to increase the Tourist Traffic to and extend their duration of stay in the State. At the beginning of 10th Plan i.e. 2002-03, the tourist arrival in the State was 34, 52,515. By the end of the 10th Plan period, i.e. 2006-07, the tourist arrival in the State was 54,16,530 . It is found that there is a growing trend in the tourist arrival to the State due to continued promotion and marketing campaigns. The growth rate at the National level is around 18% when the growth rate in Orissa is found to be around 12%. A growth rate of about 15% in the tourist arrival to Orissa is anticipated during 2007-08. Hence the target by the end of Eleventh Plan is set at 108.95 lakh tourists.

DOMESTIC & FOREIGN TOURIST VISITING ORISSA

Year	Domestic		Total	Foreign	Grand Total	% of Changes
	From Orissa	Outside Orissa				
2002-03	17,06,763	17,22,264	34,29,027	23,488	34,52,515	-
2003-04	18,50,150	19,55,818	38,05,968	25,556	38,31,524	11.0
2004-05	23,31,022	19,94,980	43,26,002	30,300	43,56,302	13.7
2005-06	23,83,404	23,12,243	46,95,647	35,731	47,31,378	8.6
2006-07	27,92,212	25,84,911	53,77,123	39,407	54,16,530	14.4

3.2. A Tourist Profile Survey was conducted during the period 2004-05 and as per finding of the said survey the average duration of stay and spending of a domestic tourist is 3.9 days and Rs.1275.00 per day while that of the foreign tourist is 12.7 days and Rs.1944.00 per day. On the basis of this, it has been estimated that the inflow of money to the state through tourist spending during the year 2006-07 was Rs 2771.06 crores.

4. Strategy

4.1. For developing and promoting the Tourist Centers of the State and to achieve the objective, a two pronged strategy is followed by the State Government, viz. to create required infrastructure within and to organise effective publicity outside the State.

4.2. In addition to the regular activities of the Tourism Department, assistance of DFID is being taken in preparing perspective plans for development of Tourism. DFID has engaged Price Water House Coopers for doing this exercise. Keeping in view the changed needs of the time, it is felt that the Orissa Tourism Policy 1997 should also be revised so as to keep pace with other developed States like Kerala, Rajasthan, Goa etc. and also the National Tourism Policy. PWC is helping the Tourism Department in preparing a new Tourism Policy, which will include matters like public private partnership. Tourism being a capital intensive subject, contribution of private sector is essentially required and hence the Tourism Department will encourage the private sector for more investment in the field of Tourism in Orissa. The State Government will act as a promoter and catalyst to create a congenial environment in this regard.

4.3. A place having the potentialities to attract tourists from out side is generally known as Tourist Centre. The number of such places so far identified as on the 31st March, 2007 in the State is 298.

4.4. The infrastructure for tourism development falls into two categories, namely, Basic and Touristic. While road, electricity, water, external and internal transport, postal and tele-

communication and medical care, etc. constitute basic facilities; accommodation, restaurant, public convenience, organised tours, recreation and guide service, etc. constitute touristic facilities. Availability of basic facilities is a prerequisite for creation of touristic facilities.

4.5. With the creation of the OTDC in 1979, the tourist facilities in shape of accommodation and transport hitherto operated by the Department as promotional ventures were transferred to them with effect from 1.9.1980 for management on commercial lines. The Department, however, continued to create and operate new tourist facilities as promotional ventures for budget tourists.

4.6. For marketing and publicity, the Department organises and/ or supports tourism fairs and festivals, arranges publication of attractive advertisements and write-ups in the media, produces informative brochures, maps, audio visuals, CD-ROMs, etc., provides hospitality to travel writers, tour operators, etc. The Department continued this activity as a regular feature. A brief about these activities has been given in chapter 5.

4.7. Tourism Development Committees at local level in association with Dist .Administrations have been formed to develop and promote tourist centers at Dhauli, Ramachandi, Kalijai, Barunei etc.

5. Highlights of Activities during 2006-07

Publications

Tourism Publications like Brochures, Folders, Posters on Fabulous Festivals, Shreekshehra Utsav, Ekamra Utsav, Konark Festival, Rajarani Music Festival, Kalinga Mahotsav etc. and destination folder on Puri, Konark, Bhubaneswar, Chilika, Gopalpur- on- sea, Chandipur, Similipal and Bhitarkanika were brought out. A brochure and a folder in English ,Russian and German language were brought out exclusively for the Russian and German market.

Media Management Agency & Event Managers

A Media Management Agency has been identified to take up the publicity matters effectively. Similarly Event Managers were engaged for organizing Tourism Events in more professional manner.

Advertisements

Attractive and innovative Advertisements were released in 121 periodicals and Dailies for promoting Orissa as a Tourist Destination.

Website

The Orissa Tourism Website was refurbished to highlight the Tourism products of the State which attracted considerable cyber- visitors. The website was given a new dimension by incorporating colourful snapshots of festivals of Orissa and the new look was nicely appreciated by all concerns. (www.orissatourism.gov.in)

Web Cast of Mukteswar Festival

For the first time Orissa Tourism in association with NIC has webcast the programmes of the Mukteswar Dance Festival. The objective of this web cast was to market Orissa in general and the cultural heritage of Orissa in particular through the use of Internet amongst the Cyber Savvy visitors.

Audio Visual

A new CD called Enchanting Orissa was prepared by takings glimpses of different themes. This was also dubbed / subtitled in Russian Language. Other available CDs were duplicated and circulated among Tour Operators, Tourist Offices, tourists etc.

Fairs & Festivals

Out side the Country

Orissa Tourism participated in Tourism Festivals like ITB Berlin, Leisure Moscow and WTM at London etc. for promoting Orissa as a Tourist Destination. Consequently, some of the Tour Operators from overseas countries visited Orissa on FAM Tour to prepare packages for their clients.

Inside the Country

Orissa Tourism participated in IITM at Bangalore, Chalojai and West Bengal Tourism Fair at Kolkata, IATO Convention at Jaipur, TTF at Kolkatta, Mumbai, Chennai & Hyderabad, TAAI Convention-Hydarabad, IITF and SATTE at New Delhi for promoting Orissa as a Tourist Destination.

While Konark Festival, Shree Kshetra Utsav at Puri, Ekamra Utsav, & Rajarani Music Festival and Kalinga Mahotsav at Bhubaneswar were organized directly by Department of Tourism, festivals like Puri Beach Festival, Folk Festival at Sambalpur, Parab (Tribal Festival) at Koraput, Beach Festival at Chandipur and Gopalpur, Chhau Festival at Baripada, Balangir and Kalahandi Mahotsav, Konark Dance & Music Festival at Konark etc. were financially supported by Orissa Tourism.

A new festival in the pattern of Surajkund Craft Mela titled Toshali National Craft Mela was organized during year 2006-07 with financial assistances of Govt.of India.

Tourism Projects:

Completion of Ongoing Projects

Emphasis was given to complete the ongoing projects on priority. Consequently the projects at Panchalingeswar, Kuldiha, Udayagiri, Keonjhar, and Chandikhol which were completed made operational during 2006-07.

By the end of 10th Plan period, while central assistance was given for individual projects, it is now given for Integrated Development of Destinations and Travel Circuits, under

Destination Development Scheme, Circuit Development Scheme & Rural Tourism Development Scheme. So that the benefit of investment can be reaped to the maximum. Similarly the Central Financial Assistance is consider more for improvement of infrastructure like approach road,Landscaping,Parking space,Public Convenience, Illumination and Interpretation Centre.

The work of Destination Development at Puri is completed and Development of Buddhist Circuit ,Gopalpur on Sea & Development of Taptapani is under way.Development of Heritage sites at Jayadev Kenduli is completed and Development of Jayadev vatika at Khandagiri is under way out of One time ACA.Govt.of India have sanctioned two projects under Destination Development one each at Similipal and Satakosia ,Four projects under Rural Tourism one each at Hirapur,Barpali,Padmanavpur & Deuljhari, two projects under Circuit Development one each at Deomali-Jeypore-Uperkolab-Gupteswar and Chandipur-Talasari-Chandaneswar-Remuna-Panchalingeswar.One project at Bhitarkanika under Development of Eco-Tourism during the year 2006-07.

Rs.15.00 crore has been earmared under 12th Finance Commission Grant for taking up Tourism related Developmental work and out of the above Rs.3.75 crore earmarked for the year 2006-07.It has been approved to take up the development of Mahurikalua and its surrounding ,Gupteswar Temple and its surrounding ,Debipadahara Kund,River Ghat around Mangala Temple at Kakatpur, Dandasahi and Siruli Mahavir and Permanent food court at Puri, Pragalapitha and Bhiattarika at Cuttack.

Guide Training Programme

163 Tourist Guides were trained during the year under self-employment programme.

Safety & Security of Tourists

5 Home Guards were deployed under S.P. Puri on the Puri-Beach to ensure safety and security of tourists .

Approval of Hotels & Hotel Projects

Approval was granted to 6 new Hotel projects for construction in Orissa during the year 2006-07. They are Hotel Blue View,Balasore, Hotel Kamas Inn,Berhampur, Brahmadev Eco Tourism Complex,near Baliharchandi ,Puri, Hotel Ashray-Rourkela and Hotel Durga Plaza-Jaleswar, Balasore, Amarpalli Resorts at Phulnakhara, Cuttack.

Recognition to Excursion Agencies

Recognition was granted to 5 Excursion Agencies in Orissa during the year 2006-07.They are Jove Travels, Destination Orissa, PP Travels, & Krishna Travels at Bhubaneswar and Swati Travels at Sambalpur.

6. Plan Outlay

6.1 It has been experienced that the plan outlay allotted for Tourism Department over the past plan periods is not only insufficient but also fluctuating year by year consequent upon which the Department is not able to embark upon any ambitious plan for creating required infrastructure inside and organising marketing & publicity campaigns outside the State to increase the tourist traffic. Though the private sector has a role to play in augmenting the efforts of the public sector, especially in creating the tourist facilities, the Department of Tourism has to ensure required infrastructure for luring more investment in the private sector. Similarly the Department of Tourism has to take the lead in organising an aggressive marketing and publicity campaign in association with the travel trade and the hospitality industry.

Plan and Programme for 2007-2008

6.2 The plan ceiling for the 11th Plan (2007-12) and 1st year of the 11th plan i.e 2007-08 has been fixed at Rs.4209.75 lakh and Rs.1340.00 lakh respectively.

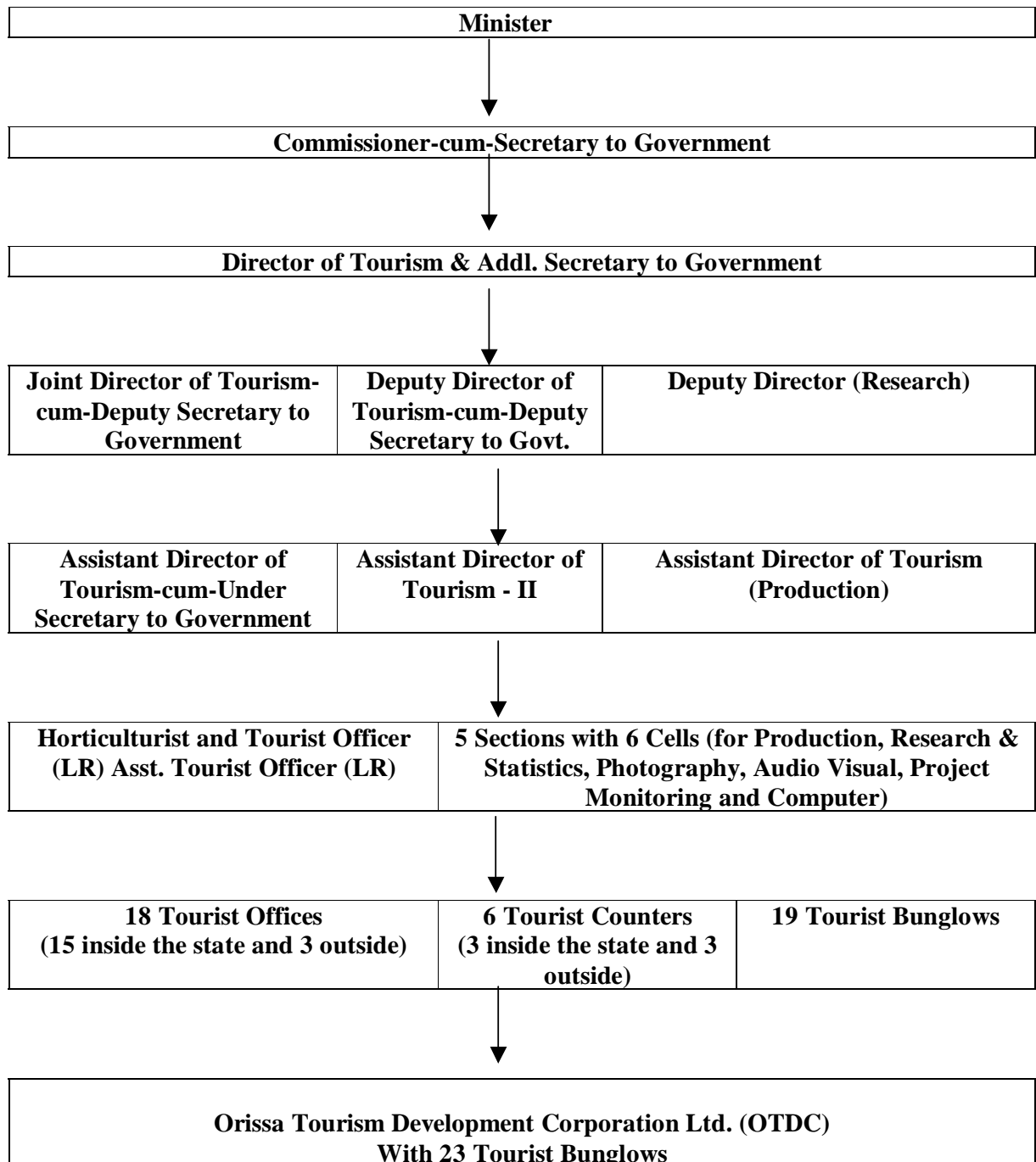
6.3 While implementing the proposed plan and programme during the 11th plan as well as for the year 2007-08, emphasis will be laid on the following thrust areas:

- i. Completion of the ongoing projects
- ii. Projecting Orissa in the domestic as well as in the overseas market as a favoured Tourist Destination through appropriate publicity and marketing including launching of special campaign .
- iii. Creating appropriate ambience for attracting private sector investment in a big way by suitable policy initiatives and synergy of activities at Government level.
- iv. Restructuring the Department to increase functional efficiency, social responsibility & Financial accountability by creating State Tourism Promotion Board and District Tourism Promotion Council.

ANNEXURE – I

ORGANISATION CHART OF THE TOURISM & CULTURE DEPARTMENT AS ON 1-03-07

(Tourism Wing)



Annexure-II

ACCOMODATION FACILITIES AVAILABLE DURING 2006-07

Tourism Units operated by Deptt.	Rooms/Beds
1. Panthasala,Nrusimhanath	5/16
2. Panthasala,Jajpur	15/46
3. Panthasala,Patharajpur	2/4
4. Panthasala, Bangiriposi	4/8
5. Panthasala,Dhabaleswar	5/16
6. Panthasala,Aradi	5/18
7. Panthasala,Gupteswar	3/14
8. Panthasala,Kapilas	5/13
9. Panthika, Sunabeda	4/8
10. Sun Villa (O.A.A), Konark	6/20
11. Tourist Complex, Atri	6/20
12. W.A.C. Girisola	4/10
13. Panthasala, Taratarini	4/10
14. Tourist Complex, Daringibadi	4/8
15. Yatrivas-cum-Cyclone Shelter, Chandaneswar.	13/20
16. Panthasala,Sarankul	4/8
17. Panthasala,Khiching	4/8
18. W.A.C.(Panthika) Khandagiri	5/28
19. W.A.C.(Panthika) Rameswar	7/14

Tourism Units operated by OTDC	Rooms/Beds
1. Panthanivas,Bhubaneswar	52/104
2. Panthanivas,Puri	49/104
3. Panthanivas, Cuttack	28/56
4. Panthanivas,Barkul	35/72
5. Panthanivas,Sambalpur	34/68
6. Panthanivas,Rambha	13/34
7. Panthanivas,Gopalpur	9/18
8. Panthanivas,Taptapani	8/22
9. Panthanivas,Chandipur	35/90
10. Panthanivas,Konark	14/32
11. Panthanivas, Rourkela	31/66
12. Panthanivas, Lulung	10/40
13. Panthabhawan, Puri	9/18
14. Panthanivas(TRC), Balasore	8/16
15. Panthika, Dhauri.	2/4
16. Yatrivas, Konark	38/80
17. Yatrivas, Satapada	28/56
18. Panthasala,Panchalingeswar	10/28
19. Aranya Nivas, Chandbali	7/20
20. Panthasala, Chandaneswar	25/53
21. Panthanivas, Paradeep.	9/18
22. Panthanivas, Dhenkanal	8/20
23. Panthanivas(TRC) Keonjhar	9/18

Annexure-III

**APPROVED OUTLAY FOR 10TH PLAN AND ANNUAL OUTLAY FOR
2002-03, 2003-04, 2004-05 , 2005-06 & 2006-07**

Rs. in lakh

Name of the Scheme	10 th Plan outlay	2002-03		2003-04		2004-05		2005-06		2006-07	
		Outlay	Expdr.	Outlay	Expdr.	Outlay	Expdr.	Outlay	Expdr.	Outlay	Expdr.
1	2	3	4	5	6	7	8	9	10	11	12
101-Tourist Centre	25.00	2.50	2.50	2.50	2.50	3.00	3.00	5.00	5.00	-	-
102-Tourist Accommodation	909.40	36.62	95.47	155.20	136.52	533.60	533.60	156.60	156.57	623.18	623.18
One time ACA	-	-	-	108.50	108.50	300.00	300.00	350.00	350.00	350.00	350.00
104-Promotion and Publicity	1261.01	117.00	121.05	166.30	166.30	240.00	240.00	265.00	265.00	385.33	385.33
Total:	2195.41	156.12	219.02	432.50	413.82	1076.60	1076.60	776.60	776.57	1358.51	1358.51

Annexure-IV

SUMMARY OF ANNUAL PLAN 2005-06

(Rs. in lakh)

Sl. No.	Purpose	Amount
1	2	3
1.	Improvement of existing tourism units	0.01
2.	Construction of Restaurant Block at Barkul	0.01
3.	Maintenance and development of garden/ landscape of tourism units	5.00
4.	Consultancy and Architectural fees	5.00
5.	Modernization of Tourist Office/ Counters	10.00
6.	Advertisement, Sales & Publicity	250.00
7.	WAC, Talchuha	2.43
8.	WAC, Ramachandi	1.43
9.	TRC, Udayagiri	4.00
10.	TRC, Ratnagiri	8.31
11.	TRC, Balasore	4.26
12.	Development of Buddhist Circuit (Lalitgiri-Ratnagiri-Udayagiri)	0.01
13.	Development of Special Tourism Area	80.00
14.	Furnishing of Tourism Units	28.14
15.	External Electrification of Tourism Units	10.00
17.	Additional Accommodation at Satapada	9.18
18.	Tourist Reception Centre, Dhenkanal	8.82
	Normal Ceiling Total:	426.60
19.	State Share to CSP	
	a. TRC, Ranipur Jharial	2.15
	b. TRC, Paralakhemundi	12.32
	c. Additional Accommodation at Satapada	3.36
	d. TRC, Rourkela	22.82
	e. TRC, Keonjhar	11.09
	f. Trekking Base at Kuldiha	8.19
	g. Yatrivas, Chandaneswar	5.52
	h. WAC, Gorakhanath Pitha	1.72
	i. WAC, Chandikhol	1.72
	j. WAC, Odogaon	1.72
	k. TC, Sambalpur	10.02
	l. TRC, Baripada	5.26
	m. Development of Chandrabhaga	5.38
	n. Development of Rural Tourism at Raghurajpur	8.73
20.	Providing Tourist Friendly Facilities i.e. Construction of bridges and road to Langudi (Buddhist Sites)	70.00
21.	Improvement of Infrastructure in existing tourism unit with high potential	30.00
22.	Furnishing of New Tourism Units	50.00
23.	Advertisement, Sales & Publicity	50.00
24.	Reconstruction and Restoration of Heritage Eco-Garden at Jayadev Kenduli	25.00
25.	Reconstruction and Restoration of Jaydev Vatika near Khandagiri for Eco-tourism	25.00
	One time ACA Total:	350.00
	G. Total:	776.60

Annexure-V

SUMMARY OF PLAN ALLOCATION FOR 2006-07

Major/Minor Head	Sl. No	Purpose	Amount (Rs. in lakh)
1	2	3	4
A-3452-Tourism 104-Promotion & Publicity	1.	Consultancy & Architectural Fees	10.00
	2.	Land acquisition near important tourist places	0.01
	3.	Deployment of Tourist Police	0.01
	4.	Advertisement, Sales & Publicity	325.30
	5.	Organization of State level festivals like Konark, Sreekshetra & Ekamra	50.00
		Total:	385.32
B-5452-Capital Outlay on Tourism 102-Tourist Accommodation	1.	Improvement & maintenance of existing tourism units and furnishing and external electrification of new tourist units.	59.97
	2.	Improvement of ambience of important beaches and tourism sites	10.00
	3.	Infrastructure for Balangir, Food Craft Institutes, Bolangir	0.01
	4.	Provide tourist Accommodation at Kenduli Village, Birth Place of Jayadev.	1.50
		Total:	71.48
C-5452-Capital Outlay on Tourism 78097-State share to CSP	1.	Additional Accommodation at Konark	3.62
	2.	Development of Chandrabhaga	9.12
	3.	Peace Park & Amphitheater at Dhauli	89.65
	4.	Development of Buddhist circuit Ratnagiri, Lalitagiri, Udayagiri & Languli	180.80
	5.	Development of Destination Tourism at Gopalpur, Chilika, Sakhigopal, Taptapani, Satakosia. And circuit Tourism at Puri-Bhubaneswar-Konark & Rural Tourism Projects.	0.01
		Total:	283.20
D-5452-Capital outlay on Tourism 78064-One time ACA.	1.	Development of Tourism facilities.	
	a.	Chandrabhaga Complex	200.00
	b.	Integrated Tourism Complex at Khandagiri	100.00
	c.	Development of Heritage site at Jayadev, Kenduli	25.00
	d.	Development of Jayadev Vatika, Khandagiri for Eco-Tourism	25.00
		Total:	350.00
		Grand Total	1090.00

FAIRS AND FESTIVAL CALENDAR OF ORISSA - 2007

Sl. No.	Name of the Fair / Festival	Day and Month as per Lunar Calendar	Date and month	Important Places of Observance
1.	Dhanu Yatra	Eleven days preceding Pausa Purnima	24 Dec'06 - 3 January'07	Bargarh (Dist. Bargarh)
2.	Folk Dance Festival	--	4-6 January	Sambalpur
3.	Ekamra Utsav	--	10-24 January	Bhubaneswar
4.	Makar Mela	Makar Sankranti	14 January	Atri, Kalijai (Chilika), Jagatsinghpur, Jashipur, etc
5.	Kalahandi Utsav	--	14-17 January	Bhawanipatna
6.	Gopalpur Beach Festival	--	14-18 January	Gopalpur
7.	Saraswati Puja	Magha Sukla Panchami	23 January	Throughout Orissa
8.	Magha Saptami (Magha Mela)	Magha Sukla Sasthi-Saptami	24-25 January	Chandrabhaga (Konark)
9.	Khandagiri Mela	One week from Magha Sukla Saptami	25-31 January	Khandagiri-Udayagiri, Bhubaneswar
10.	National Kharvel Festival	--	25-31 January	Khandagiri (Bhubaneswar)
11.	Adivasi Mela (Tribal Festival)	--	26-31 January	Bhubaneswar
12.	Joranda Mela	Magha Sukla Chaturdashi	31 January	Joranda (Dist.Dhenkanal)
13.	Kalinga Mahotsav	--	4-5 February	Dhauri, Bhubaneswar
14.	Maha Sivaratri	Falgun Krushna Chaturdashi	16 February	Bhubaneswar, Kapilash, Sarankul, Mahendragiri, Aradi, Huma, Khiching, etc.
15.	Konark Dance & Music Festival	--	19-21 February	Konark
16.	Rajarani Music Festival	--	26-28 February	Bhubaneswar
17.	Dola & Holi	Falgun Purnima and the day following	3 & 4 March	Throughout Orissa
18.	Taratarini Yatra	2nd and 3rd Tuesday of Chaitra	13 & 20 March	Taratarini Pitha (Dist. Ganjam)
19.	Ashokastami	Chaitra Sukla Astami	26 March	Bhubaneswar
20.	Sriram Navami	Chaitra Sukla Navami	27 March	Bhubaneswar, Odagaon and Saptasaja
21.	Jhamu Yatra	Last Tuesday of Chaitra	27 March	Kakatpur (Dist.Puri)
22.	Utkal Divas	--	1 April	Bhubaneswar and other places
23.	Chaitra Parba and Chhow Festival	Three days preceding Maha Bishuba Sankranti	12-14 April	Baripada
24.	Chadak Mela	Three days preceding Maha Bishuba Sankranti	12-14 April	Chandaneswar
25.	Nrusimhanath Mela	Baisakha Sukla Chaturdashi	30 April	Nrusimhanath and Harishankar

Sl. No.	Name of the Fair / Festival	Day and Month as per Lunar Calendar	Date and month	Important Places of Observance
27.	Sitalasasthi	Jyestha Sukla Sasthi	20 June	Sambalpur
28.	Snana Yatra	Jyestha Purnima	30 June	Puri
29.	Rath Yatra	Asadha Sukla Dwitiya	16 July	Puri, Kendrapara, Baripada, Berhampur and other parts of Orissa
30.	Bahuda Yatra	Asadha Sukla Dasami	24 July	Puri, Kendrapara, Baripada, Berhampur and other parts of Orissa
31.	Jhulana Yatra	Sraban Sukla Dasami to Purnami	23-28 August	Puri
32.	Ganesh Puja	Bhadrab Sukla Chaturthi	15 September	Throughout Orissa
33.	Nuakhai	Bhadrab Sukla Panchami	16 September	Western part of Orissa
34.	Biswakarma Puja	Kanya Sankranti	17 September	Throughout Orissa
35.	Durga Puja	Aswina Sukla Saptami to Dasami	18-21 October	Orissa in general and Cuttack in particular
36.	Kumar Purnima	Aswina Purnima	25 October	Throughout Orissa
37.	Gajalaxmi Puja	One week from Aswina Purnima	25-31 October	Dhenkanal Town
38.	Vedavyas Sangeet Nrutya Utsav	--	1-5 November	Rourkela
39.	Mandei	--	1-5 November	Nawarangpur
40.	Kali Puja	One week from Kartika Amabasya	9-15 November	Bhadrak
41.	Parab (Tribal Festival)	--	16-18 November	Koraput
42.	Anla Navami	Kartika Sukla Navami	19 November	Sakhigopal
43.	Bada Osha	Kartika Sukla Chaturdashi	23 November	Dhavaleswar
44.	Puri Beach Festival	--	23-27 November	Puri
45.	Bali Yatra	Kartika Purnima	24 November	Cuttack, Paradeep, Konark & Balugaon (Chilika)
46.	Konark Festival	--	1-5 December	Konark

**BIJU PATNAIK AIRPORT- BHUBANESWAR
FLIGHT SCHEDULE & TARIFF**

INDIAN						
DESTINATION	FLIGHT NO.	DAYS	DEP.	ARR.	FARE (In Rs.)	
					Y CLASS	J CLASS
Bhubaneswar-Delhi	IC878	Daily	1430	1630	14180/-	20415/-
Bhubaneswar-Delhi	IC7479	Daily	2030	2230	14180/	20415/
Delhi-Bhubaneswar	IC877	Daily	1145	1345	14180/	20415/
Delhi -Bhubaneswar	IC7479	Daily	1655	2000	14180/	20415/
Bhubaneswar-Kolkata	IC7541	Daily	1225	1320	5625/-	Not Existing
Kolkata-Bhubaneswar	IC7542	Daily	1430	1525	5625/-	Not Existing
Bhubaneswar-Chennai	IC7542	Daily	1555	1750	11180/-	Not Existing
Chennai-Bhubaneswar	IC7541	Daily	1000	1155	11180/-	Not Existing
Bhubaneswar-Mumbai	IC169	Daily	1415	1615	15205/-	21980/-
Mumbai-Bhubaneswar	IC169	Daily	1025	1335	15205/-	21980/-
Bhubaneswar-Bangalore	IC512	Tues,Fri	1325	1520	11830/-	Not Existing
Bhubaneswar-Bangalore	IC7542	Daily	1555	1915	11830/	Not Existing
Bangalore-Bhubaneswar	IC511	Tues,Fri	1030	1225	11830/	Not Existing
Bangalore-Bhubaneswar	IC7541	Daily	0830	1155	11830/	Not Existing
Raipur-Bhubaneswar	IC169	Daily	1235	1335	6500/-	Not Existing
SAHARA AIR LINES						
Bhubaneswar-Delhi	S2 6144	Daily	1020	1220	14330/-	
Delhi-Bhubaneswar	S2 6143	Daily	0745	0945	14330/-	
AIR DECCAN						
Bhubaneswar-Delhi	DN677	Daily	1815	2015	No Fixed Fare	
Delhi-Bhubaneswar	DN608	Daily	0820	1020	do	
Bhubaneswar-Kolkata	DN556	Daily	1915	2030	do	
Bhubaneswar-Kolkata	DN641	Daily	0835	0915	do	
Kolkata-bhubaneswar	DN555	Daily	1745	1900	do	
Kolkata-Bhubaneswar	DN642	Daily	1020	1100	do	
Bhubaneswar-Chennai	DN762	Daily	1055	1235	do	
Chennai-Bhubaneswar	DN761	Daily	0840	1025	do	
Bhubaneswar-Mumbai	DN642	Daily	1130	1325	do	
Mumbai-Bhubaneswar	DN641	Daily	0555	0805	do	
Bhubaneswar-Bangalore	DN762	Daily	1055	1355	do	
Bangalore-Bhubaneswar	DN761	Daily	0725	1025	do	
Bhubaneswar-Hyderabad	DN608	Daily	1050	1215	do	
Hyderabad-Bhubaneswar	DN677	Daily	1620	1745	do	
Bhubaneswar-Vizag	DN406	Daily	1100	1225	do	
Vizag-Bhubaneswar	DN405	Daily	0920	1045	do	

KING FISHER AIR LINES						
Bhubaneswar-Hyderabad-Delhi	IT803	Daily	1415	1950	14330/-	
Delhi-Hyderabad-Bhubaneswar	IT802	Daily	0920	1325	14330/-	
Bhubaneswar-Kolkata	IT2502	Daily	0900	1015	5775/-	
Bhubaneswar-Kolkata	IT2504	Daily	2215	2330	5775/-	
Kolkata-Bhubaneswar	IT2501	Daily	0715	0830	5775/-	
Kolkata- Bhubaneswar	IT2503	Daily	2035	2145	5775/-	
Bhubaneswar-Hyderabad	IT803	Daily	1415	1550	9600/-	
Hyderabad-Bhubaneswar	802		1210	1335	9600/-	

NB: Fare/ Timing subject to change

Airport Enquiry: 0674-2535743/731/732/733/2534477

City Booking Office: 0674-2530533/544

Sahara Air Lines: 0674-2535007,2535729,2535748,2535749,180022302

Deccan Air Lines:0674-2539222,2539224,6451228

King fisher Air Lines:0674-2533074

TRAIN TIMING AT BHUBANESWAR RAILWAY STATION

UP TRAINS				NAME OF THE TRAIN	DOWN TRAINS			
Train No.	Days of Operation	Arr.	Dep.		Train No.	Days of Operation	Arr.	Dep.
2802	Daily	03.50	04.00	New Delhi-Puri Purushottam Express	2801	Daily	23.20	23.30
2820	Wed,Sat	13.20	-	New Delhi-Bhubaneswar Orissa Sampark Kranti Express	2819	Wed,Sun	-	15.55
2816	Su,Tu,Th,Fri	10.55	11.05	New Delhi-Puri Neelachal Superfast Express(Via Adra)	2815	M,W,Th,Sat	12.10	12.20
2876	M,Wed,,Sat	15.20	15.30	New Delhi-Puri Neelachal Express(Via Tata)	2875	Tues,Fri,Su	12.10	12.20
2422	Sat,Tues	16.00	-	New Delhi-Bhubaneswar Rajdhani Express	2421	Sun,Wed	-	11.10
2444	Sun,Thu	17.50	-	New Delhi Bhubaneswar Rajdhani Express(Via Tata)	2443	Mon,Fri	-	09.05
8478	Daily	04.35	04.45	Haridwar-Puri Kalinga Utkal Express	8477	Daily	22.45	22.50
8508	Mon,Tue,Fri	16.10	16.20	Visakhapatnam –Amritsar Hirakud Express	8507	Tues,Fri,Sat	07.50	08.00
2837	Daily	05.30	05.40	Howrah-Puri Express	2838	Daily	21.45	21.55
8409	Daily	02.40	02.50	Howrah-Puri Sri Jagannath Express	8410	Daily	00.05	00.15
2821	Daily	12.55	-	Howrah-Bhubaneswar Superfast Dhauli Express	2822	Daily	-	13.15
2073	Except Sun	20.20	-	Howrah-Bhubaneswar Janshatabdi Express(Via Cuttack)	2074	Except Sun	-	06.00
2895	Sat	04.50	05.00	Howrah-Puri Express	2896	Thu	23.35	23.45
2887	Tue	04.50	05.00	Howrah-Puri Express	2888	Sun	23.35	23.45
5640	Fri,Sat	01.45	01.50	Guwahati-Puri Express	5639	Sat	15.50	15.55
8645	Daily	19.25	19.40	Howrah-Hyderabad East Coast Express	8646	Daily	07.35	07.45
2703	Daily	13.55	14.10	Howrah-Secunderabad Falknuma Superfast Express	2704	Daily	10.50	11.00
7015	Daily	-	08.25	Bhubaneswar-Secunderabad Vishakhai Express	7016	Daily	15.10	-
2514	Thu	7.55	08.05	Guwahati-Secunderabad ExpressI	2513	Mon	03.00	03.05
2830	Fri	-	11.45	Bhubaneswar-Chennai Central Express	2829	Sun	17.30	-
2898	Tues	-	11.45	Bhubaneswar- Pondicherry Express	2897	Thu	19.25	-
2841	Daily	21.25	21.40	Howrah-Chennai Coramandal Express	2842	Daily	05.00	05.05
2603	Daily	06.38	06.43	Howrah-Chennai Mail	2604	Daily	20.35	20.45
5930	Tues	22.40	22.50	Dibrugarh-Chennai Express	5929	Fri	19.25	19.40
5630	Sat	22.40	22.50	Guwahati-Chennai Express	5629	Tues	19.25	19.40
2508	Sat	07.55	08.05	Guwahati- Ernakulam Express	2507	Thu	06.25	06.40
2516	Thu	07.55	08.05	Guwahati-Thiruvananthapuram Express	2515	Tues	03.00	03.05
6324	Mon,Wed	07.15	07.30	Howrah-ThiruvananthapuramExpress	6323	Mon, sat	03.00	03.05
2660	Thu	07.15	07.30	Howrah-Nagercoil Gurudev Express	2659	Tues	03.00	03.05
2663	Thu,Sun	22.40	22.50	Howrah-Tiruchirapalli Express	2664	Sat,wed	19.25	19.40
2665	Mon	22.40	22.50	Howrah-Kanyakumari Express	2666	Sun	19.25	19.40
8563	Daily	-	04.15	Bhubaneswar- Bangalore Express	8564	Daily	20.55	-
2510	Mon,Tue,Wed	07.55	08.05	Guwahati- Bangalore Express	2509	Fri,sat,sun	03.00	03.05
2845	Sun	-	07.30	Bhubaneswar-Yashawantpur Express	2846	Wed	11.30	-
2863	Daily	03.10	03.20	Howrah-Yashawantpur Express	2864	Daily	23.05	23.15
5228	Tues	07.15	07.30	Muzaffarpur-Yashawantpur Express	5227	Fri	06.25	06.40
2845	Sun	-	07.30	Bhubaneswar-Yashawantpur Express	2846	Wed	11.30	-
2847	Tu,Wed,Fri,Sun	06.20	06.25	Howrah-VascoDagamaAmaravati Express	2848	Mon,wed	15.35	15.40
6310	Thu,Fri	07.15	07.30	Patna-Ernakulam Express	6309	Wed,thu	03.00	03.05
8450	Thu	01.45	01.50	Patna-Puri Baidyanath Dham Express	8449	Mon	15.50	15.55
8474	Mon	10.30	10.35	Jodhpur-Puri Express	8473	Wed	16.05	16.10
1020	Daily	-	15.15	Bhubaneswar-Mumbai Konark Express	1019	daily	04.35	-
2145	Tues	04.20	-	Bhubaneswar-Kurla Lokamanya Tilak Express(Via-Sambalpur)	2146	Tues	-	23.00
8126	Daily	07.45	-	Bhubaneswar-Raipur Express.	8425	Daily	-	19.15
8406	Sun	07.00	07.05	Ahmedabad-Puri Express(Via-Sambalpur)	8405	Wed	20.00	20.10
8451	Daily	05.55	06.05	Hatia-Puri Tapaswani Express(Via-Sambalpur)	8452	Daily	22.15	22.25
2894	Daily	-	22.00	Bhubaneswar-Sambalpur Express	2893	Daily	05.45	-
8303	Except Sun	10.45	11.15	Sambalpur-Puri Intercity Express(Via-Naraj)	8304	Except Sun	18.00	18.10
2891	Mon,Th,Sat	10.00	-	Bhubaneswar-Baripada Express	2892	Wed,fri,sun	-	23.55
8411	Except Sun	-	05.25	Bhubaneswar-Vishakhapatnam Intercity Express	8412	Except Sun	22.50	-
8447	Daily	-	20.00	Bhubaneswar-Koraput Hirakhand Express	8448	Daily	08.30	-

UP TRAINS				NAME OF THE TRAIN	DOWN TRAINS			
Train No.	Days of Operation	Arr.	Dep.		Train No.	Days of Operation	Arr.	Dep.
PASSENGER TRAINS								
201	Daily	13.40	13.50	Howrah-Puri Passenger(Via Naraj)	202	Daily	11.50	11.55
203	Except Sun	11.30	11.35	Howrah-Khurda Road First Passenger(Via Naraj)	204	Except Sun	16.45	16.50
211	Daily	20.45	20.50	Rourkela-Puri Passenger(Via Talcher)	212	Daily	06.45	06.50
213	Daily	17.40	17.45	Cuttack-Puri Passenger	214	Daily	09.45	09.50
209	Daily	09.31	06.36	Dhenkanal-Puri Passenger	210	Daily	18.15	18.20
221	Daily	09.07	09.12	Angul-Khurda Road Fast Passenger(Via Naraj)	222	Daily	17.10	17.15
207	Daily	09.50	-	Bhadrak-Bhubaneswar Passenger	208	Daily	-	18.30
207-B	Daily	-	09.55	Bhubaneswar-Khallikote Passenger	208-B	Daily	17.45	-
DMU-I	Daily	17.20	17.25	Cuttack- Palasa Passenger	DMU-II	Daily	09.23	09.28
219	Daily	-	19.15	Bhubaneswar-Palasa Passenger	220	Daily	10.05	-
233	Daily	18.35	18.45	Cuttack-Berhampur Passenger	234	Daily	10.20	10.25

- Timing subject to change.